

# PRODUCT CATALOGUE



# SPECIFICATION

	FR3		FR5		FR10		
Specification	Payload	3kg	5kg	10kg			
	Reach	622mm	922mm	1400mm			
	Range	6	6	6			
	HMI	10.1 inch teach pendant or mobile terminal APP					
Movement	Repeatability	±0.02mm		±0.05mm			
	Axis movement	Working range	Maximum speed	Working range	Maximum speed	Working range	Maximum speed
	1 Axle	±175°	±180°/s	±175°	±180°/s	±175°	±120°/s
	2 Axle	+ 85°/ - 265°	±180°/s	+ 85°/ - 265°	±180°/s	+ 85°/ 265°	±120°/s
	3 Axle	±150°	±180°/s	±160°	±180°/s	±160°	±180°/s
	4 Axle	+ 85°/ - 265°	±180°/s	+ 85°/ - 265°	±180°/s	+ 85°/ 265°	±180°/s
	5 Axle	±175°	±180°/s	±175°	±180°/s	±175°	±180°/s
	6 Axle	±175°	±180°/s	±175°	±180°/s	±175°	±180°/s
	Typical TCP speed	1m/s	1m/s	1.5m/s			
Features	IP classification	IP54 (Optional IP66)		IP54 (Optional IP66)			
	Noise	<65dB		<65dB			
	Robot mounting	Any orientation		Any orientation			
	I/O	(DI) 2	(DO) 2	(DI) 2	(DO) 2	(DI) 2	(DO) 2
		(AI) 1	(AO) 1	(AI) 1	(AO) 1	(AI) 1	(AO) 1
	Power supply	24V/1.5A		24V/1.5A		24V/1.5A	
	Communication	I/O、TCP/IP、Modbus_TCP/RTU、Profinet		I/O、TCP/IP、Modbus_TCP/RTU、Profinet		I/O、TCP/IP、Modbus_TCP/RTU、Profinet	
Development environment	C#/C++/Python/java/ROS		C#/C++/Python/java/ROS		C#/C++/Python/java/ROS		
Physical	Footprint	130mm	150mm	190mm			
	Weight	≈15kg	≈22kg	≈40kg			
	Operating temperature	0-45		0-45		0-45	
	Operating humidity	90%RH(non-condensing)		90%RH(non-condensing)		90%RH(non-condensing)	
	Materials	Aluminium、Steel		Aluminium、Steel		Aluminium、Steel	



# SPECIFICATION

	FR16		FR20		
Specification	Payload	16kg	20kg		
	Reach	1076mm	1868mm		
	Range	6	6		
	HMI	10.1 inch teach pendant or mobile terminal APP			
Movement	Repeatability	±0.03mm		±0.1mm	
	Axis movement	Working range	Maximum speed	Working range	Maximum speed
	1 Axle	±175°	±120°/s	±175°	±120°/s
	2 Axle	+ 85°/ 265°	±120°/s	+ 85°/ 265°	±120°/s
	3 Axle	±160°	±180°/s	±160°	±120°/s
	4 Axle	+ 85°/ 265°	±180°/s	+ 85°/ 265°	±180°/s
	5 Axle	±175°	±180°/s	±175°	±180°/s
	6 Axle	±175°	±180°/s	±175°	±180°/s
	Typical TCP speed	1m/s		2m/s	
Features	IP classification	IP54 (Optional IP66)		IP54 (Optional IP66)	
	Noise	<65dB		<65dB	
	Robot mounting	Any orientation		Any orientation	
	I/O	(DI) 2	(DO) 2	(DI) 2	(DO) 2
		(AI) 1	(AO) 1	(AI) 1	(AO) 1
	Power supply	24V/1.5A		24V/1.5A	
	Communication	I/O、TCP/IP、Modbus_TCP/RTU、Profinet		I/O、TCP/IP、Modbus_TCP/RTU、Profinet	
Development environment	C#/C++/Python/java/ROS		C#/C++/Python/java/ROS		
Physical	Footprint	190mm	240mm		
	Weight	≈40kg	≈65kg		
	Operating temperature	0-45		0-45	
	Operating humidity	90%RH(non-condensing)		90%RH(non-condensing)	
	Materials	Aluminium、Steel		Aluminium、Steel	



## SAFETY REMOTE



Human-computer interaction tool, which can realize basic interactive functions. It can be linked with computers, tablets and other devices through the RJ45 interface, and directly log in to the web teaching interface.

- Simple to use
- Easy to operate
- Flexible to deploy

Features	IP classification	IP54
	Network transfer rate	100M Standard POE
	Number of keys	≥20W Order
Physical	L*W*H	136*60*66mm
	Weight	490g (Belt weight)
	Materials	ABS
	Cable length	5m

## TEACH PENDANT [ Optional ]

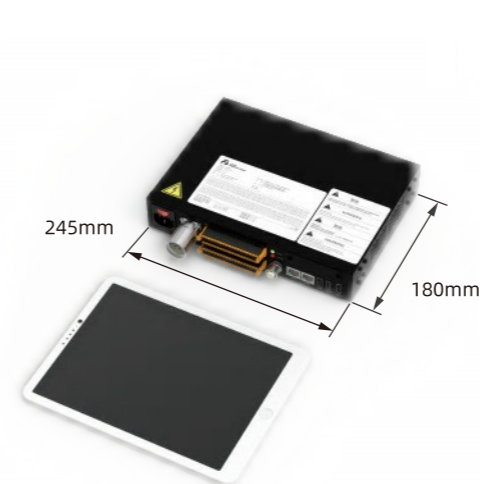
All operations in one place



The teach pendant, computer, tablet or mobile phone is connected to the WebAPP system to realize the operation of the collaborative robot.

- The user interface is more intuitive
- Wide range of technological packages
- Cloud deployment provides greater convenience

## CONTROL BOX



Small size, light weight, convenient installation and flexible deployment; Provide rich interfaces: I/O, TCP/IP, Modbus\_TCP/RTU, Profinet etc., supporting for multiple development environment: C#/C++/Python/java/ROS, etc.

Features	IP classification	IP54
	Operating temperature	0-45 Degrees Cel si us
	Operating humidity	90%RH(non-condensing)
	I/O	(DI) 16 (DO) 16 (AI) 2 (AO) 2 (High speed pulse input) 2
Physical	Power supply	24V/1.5A
	L*W*H	245*180*44.5mm
	Weight	2.1kg
	Materials	Galvanized sheet

Features	IP classification	IP54
	Operating humidity	90%RH(non-condensing)
	Display resolution	1280 x 800 pixels
Physical	L*W*H	268*210*88mm
	Weight	1.6kg
	Materials	ABS、PP
	Cable length	5m

# INDUSTRY

Abundant welding process kits, with a variety of welding technologies, seam welding, straight welding, oscillating welding, arc welding, and multi-layer multi-pass welding. It also incorporates intelligent welding technologies for wire positioning and weld seam tracking, significantly enhancing welding efficiency and ensuring welding quality.

## Welding Solution

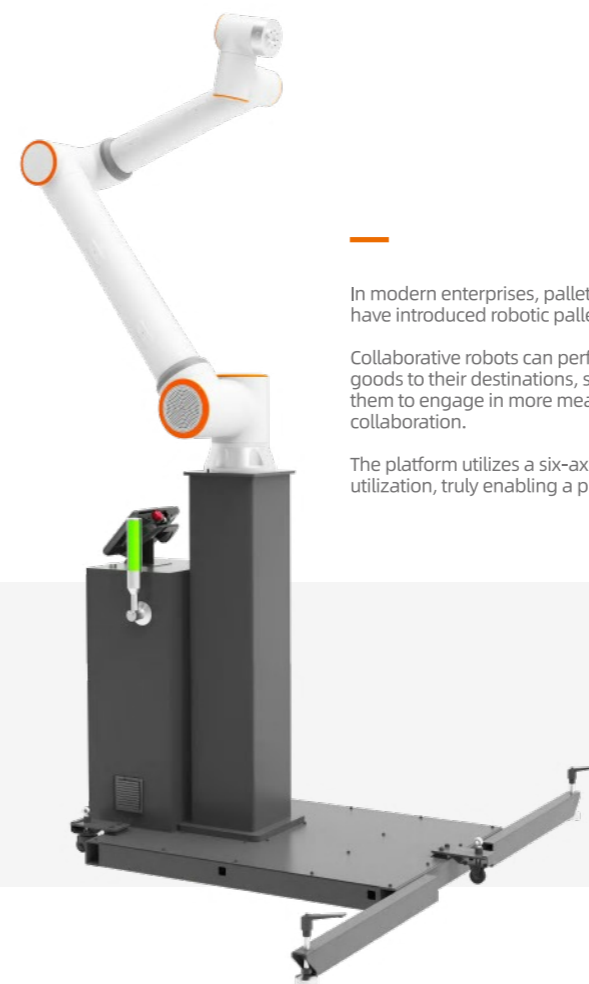
- Ultimate safety
- Flexible deployment
- Reduced entry barriers
- Multi-axis coordination
- High production efficiency



## Screw Locking Solution

Combined with the end intelligent tightening device at the end, it achieves adjustable, controllable, and programmable torque, making it suitable for screw locking in various scenarios. It can stably, efficiently, and accurately complete the production process, greatly reducing repetitive labour for workers and supporting data traceability.

- Safe and convenient
- Flexible deployment
- Flexible force control
- High efficiency in production



In modern enterprises, palletizing work is very common. Due to the low efficiency of manual handling, many companies have introduced robotic palletizing systems to automate this task.

Collaborative robots can perform round-the-clock automated palletizing work, effortlessly and quickly transporting goods to their destinations, saving time and energy. This frees employees from fatigue and repetitive tasks, allowing them to engage in more meaningful work. Additionally, there is no need for safety barriers, enabling true human-robot collaboration.

The platform utilizes a six-axis collaborative robot to accomplish palletizing work, offering easy deployment and quick utilization, truly enabling a plug-and-play experience.

## Palletizing Solution

# APPLICATIONS



## Conveyor Belt Solution

- Enhance work safety
- Reduce error rate and losses
- Data recording and traceability
- Real-time monitoring and feedback
- Improve production efficiency
- Accurate tracking and identification

## Educational Solution

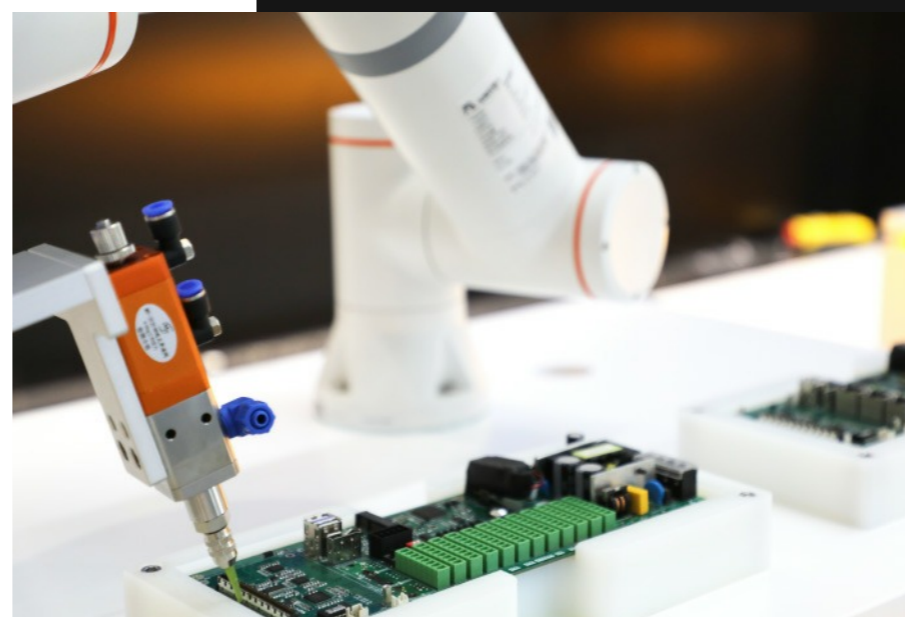


The platform includes common functions in the industrial field, such as gluing, tightening, and material handling, closely aligning with actual production line scenarios. It allows students to experience the real factory atmosphere up close in the classroom, making it an invaluable collaborative robot training platform in the field of education.



## Pick And Place Solution

Material handling robots can improve production efficiency, quality, and safety, reduce labour intensity, and provide flexibility and adaptability, bringing higher benefits and competitive advantages to businesses.



## Glue Dispensing Solution

Paired with an intelligent dispensing device at the end effector, it enables precise operations and is suitable for precise gluing and dispensing tasks in various scenarios. It can achieve stable, efficient, and accurate adhesive application, ensuring the quality of the adhesive work. This greatly reduces repetitive labour for workers and protects their health.

# COMMERCIAL

It has achieved integration of upper limb rehabilitation and lower limb exercise, reducing the barrier to entry through the reproduction of motion trajectories. By recording real-time feedback data, it significantly enhances safety performance. With various mode settings, it makes rehabilitation treatment more targeted, leading to a significant improvement in rehabilitation efficiency.

## Rehabilitation Solution

- Ultimate safety
- Open platform
- Data traceability
- Reduced entry barriers



## Moxibustion Solution

It fully replicates the five major moxibustion techniques, offering hovering moxibustion, sparrow pecking moxibustion, rotating moxibustion, reciprocating moxibustion, and meridian moxibustion, thus reducing the barrier to entry for moxibustion. With the latest certifications, it is equipped with end collision detection, temperature control, and infrared distance measurement, providing triple protection to ensure the safety of moxibustion. It also has a built-in suction device to prevent inhalation of smoke and dust during the moxibustion process.

- Ultimate safety
- Flexible deployment
- Efficient moxibustion
- Lower barrier to entry



Cooperative robots can be applied in various types of new retail scenarios and can be customized according to different scenario requirements. Benefits include:

- Cost-saving: They replace manual labour, reducing manpower costs while increasing work efficiency.
- Consistent tea brewing: They ensure consistent taste regardless of different operators or different time points, eliminating variations caused by human factors.
- Entertainment value: The robotic performance brings enjoyment to consumers, while employees can focus on more fulfilling and higher-paying jobs.
- Cost-effective: They have low costs and provide a quick return on investment, resulting in good economic benefits.
- Small footprint: They occupy less space, resulting in higher space utilization and adaptability to various innovative business models.

## Automated Tea Solution

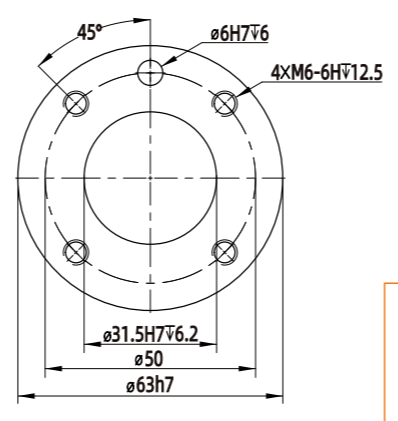
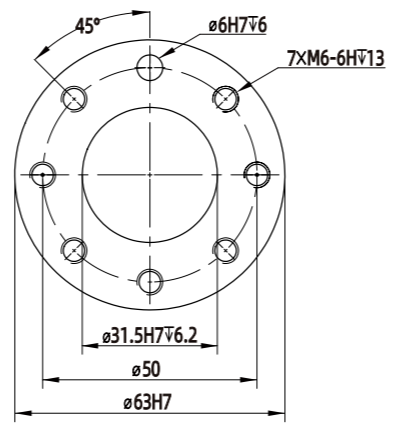




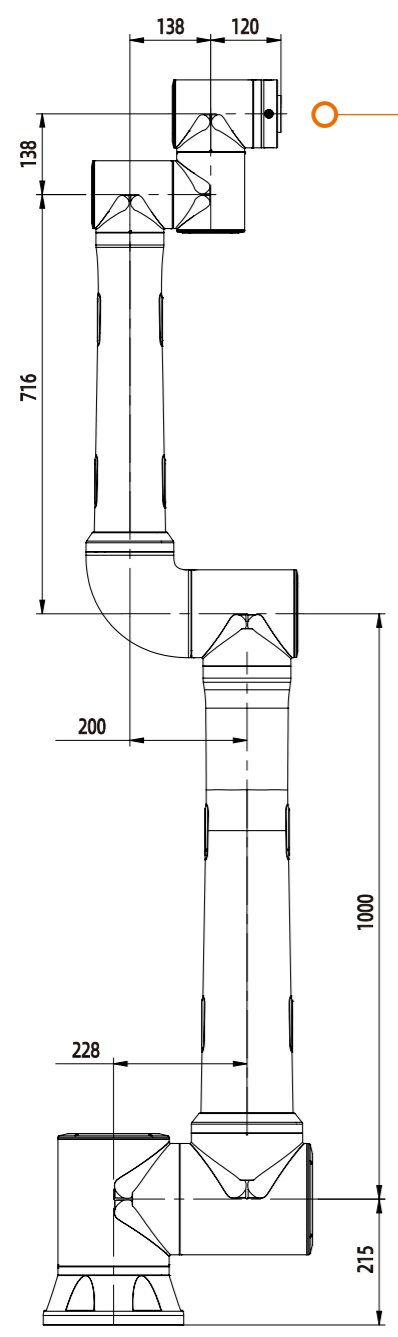
# DRAWINGS

Unit : mm

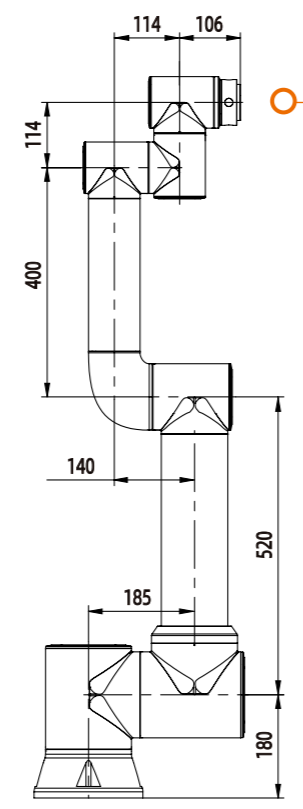
ROBOT END-EFFECTOR COMPATIBLE WITH INDUSTRIAL ROBOT END-EFFECTOR CONNECTION METHODS



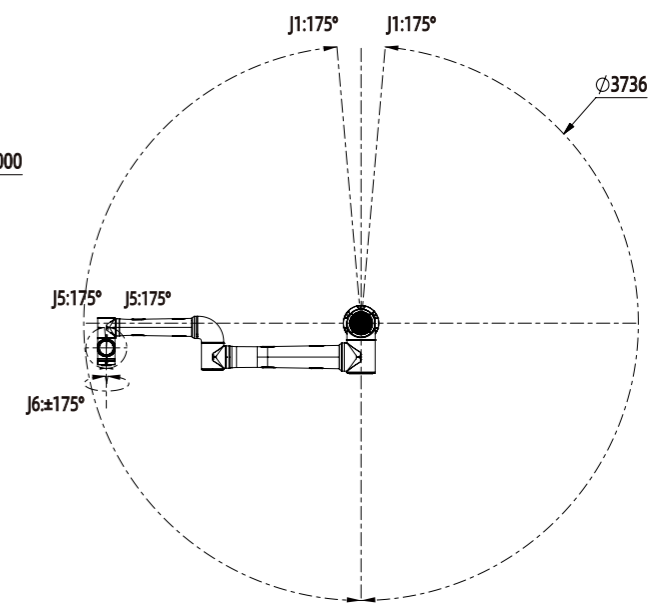
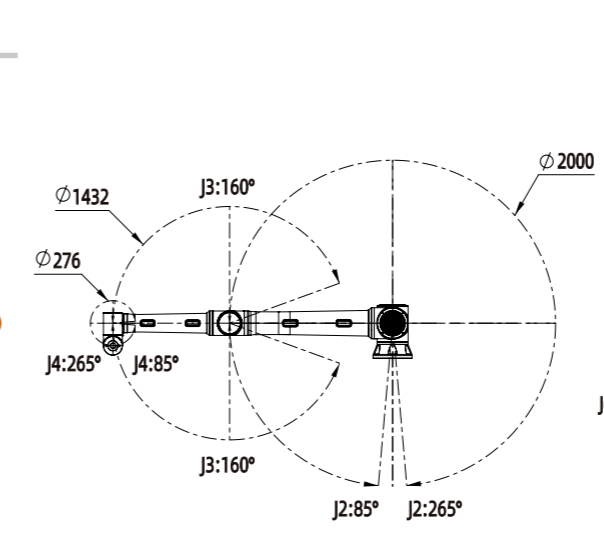
ROBOT END-EFFECTORS ALL ADOPT INTERNATIONAL STANDARDS



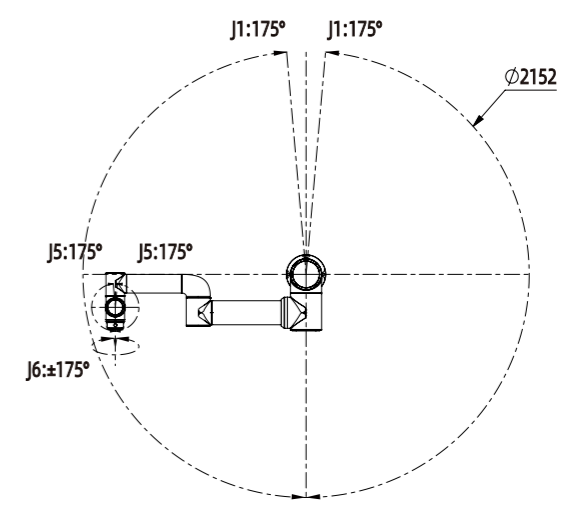
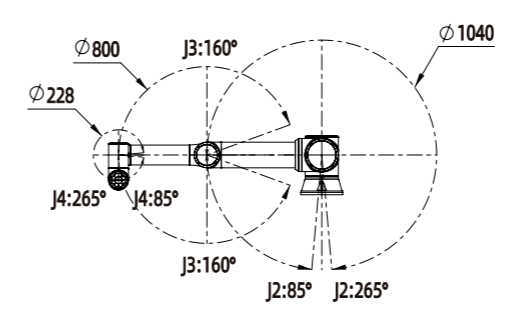
FR20



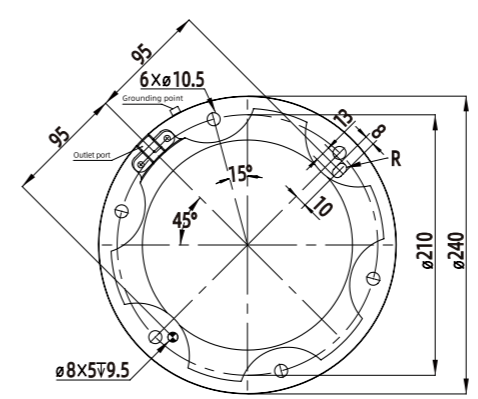
FR16



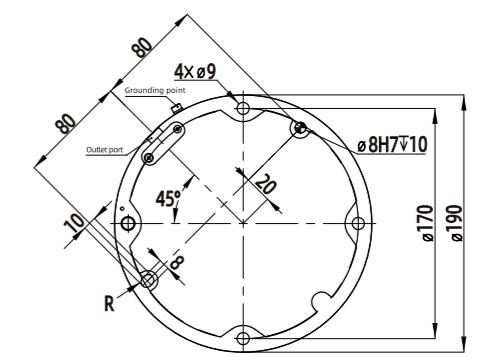
FR20



FR16



FR20 Pedestal diagram



FR16 Pedestal diagram